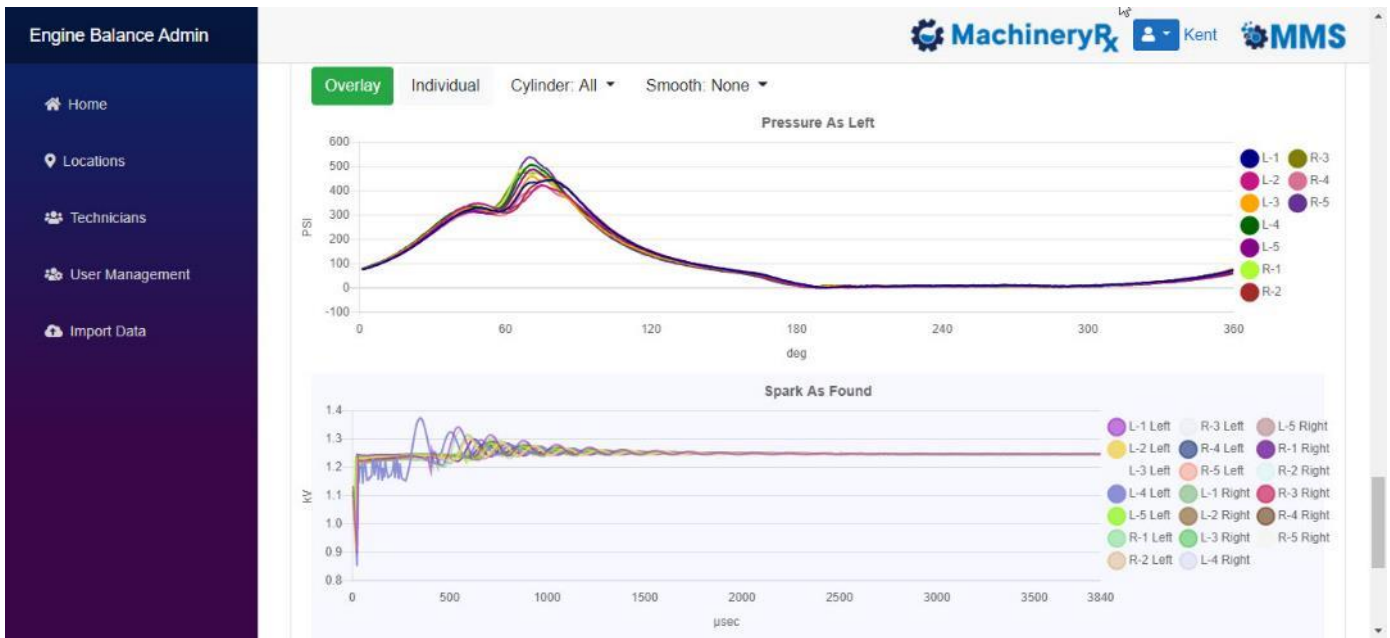




MachineryRx™

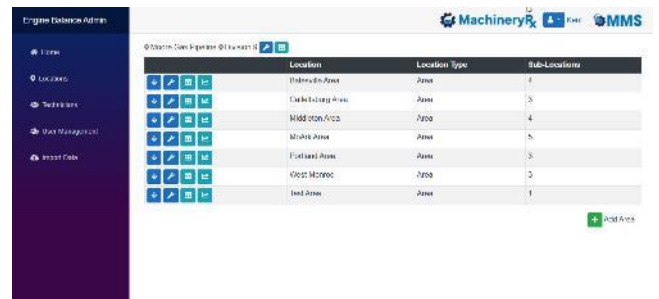


MachineryRx™ is a revolutionary new way to track engine balance across your entire organization! A simple-to-use website provides a single location for your operators and analysts to upload their engine balance results. The MachineryRx website supports automatic uploads from MMS' Snapshot Engine Balancer® along with simple form-entry for non-MMS analyzer users.



Summary Item	Total	Balanced	Balanced	Avg Hours	Avg Minutes	Percent	Permitted	Total
Level	Worklist	Balance	Early	Balance	% Balance	Left Good	Approved	Power
Overall	76	300	84%	9.07%	375.5	93.1	26	153,300
	76	290	84.48%	9.077%	376.6 hrs	28.1 min	26	143,860

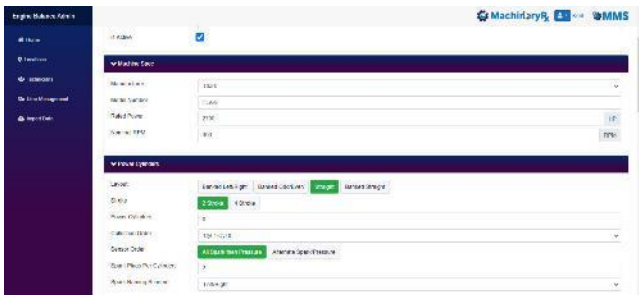
Home page lists recent balance job for users' area of responsibility (e.g., Corporate, Division, Area, Station)



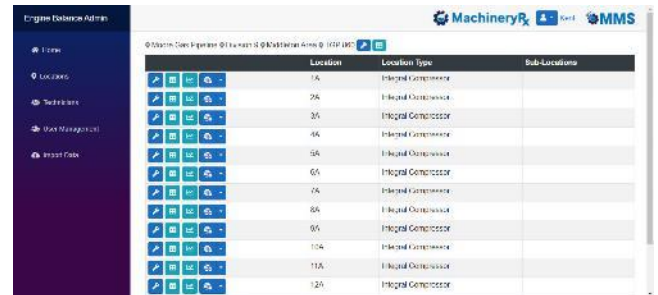
Location	Location Type	Sub-Locations
Flintshire Area	Area	1
Carroll County Area	Area	3
Middleton Area	Area	4
Murphy Area	Area	5
Eastland Area	Area	3
West Monroe	Area	3
East Area	Area	1

Click to drill down through different levels

- Organize balance data by multiple, custom levels (e.g., Corporate, Division, Region, Station, Machine)
- Access levels controlled by log-in permissions by user
- Share information and data across company
- Enhance ability for peer advice/review throughout organization
- No software to install...just web browser and log-in credentials
- Acceptable balance limits and balance intervals customizable at each level (Corporate, Division, Area, Station and Machine)
- Website securely hosted on Microsoft Azure
- Compare engine balance data across entire company by Unit Model Number
- Informative and actionable reports for management. Managers can add recommendations to a particular balance report
- Automatic upload of balance data from MMS Snapshot Engine Balancers including:
 - Power cylinder pressure and ignition curves
 - As-Found and As-Left data
 - Panel Points
 - Operator Comments
- Simple data entry from non-MMS (Legacy) balancers
 - Operator/Analyst logs into MachineryRx website and enters balance data
 - No redundant entry of information
- Customizable security features



Snapshot Balancer setups stored on MachineryRx website



Easy single click navigation through MachineryRx website

